

Oribiotech | iro

# The New Standard of CGT Manufacturing.

IRO<sup>®</sup> is an automated, closed cell therapy platform that is flexible and scalable to maximize your clinical and commercial impact.



## Automate Better Biology with IRO

For too long, you have had to sacrifice biological performance for automation. Not anymore.

- ✓ Compatible with all suspension cell therapies including CAR-T, TIL, TCR-T, NK and CD34+
- ✓ Start with ~50M cells (at 50ml) and yield up to 12B cells (at 1L) with high viability
- ✓ Achieves higher transduction efficiency and cell yields than the current "gold standard" cell expansion system
- ✓ Reduces manufacturing process times by an average of 1-2 days
- ✓ Patented OriConnect™ System closes and automates sterile fluid transfer



# Accelerate Product Development with IRO®

IRO can help you quickly transition from R&D into the clinic, and from the clinic to commercial-scale manufacturing.

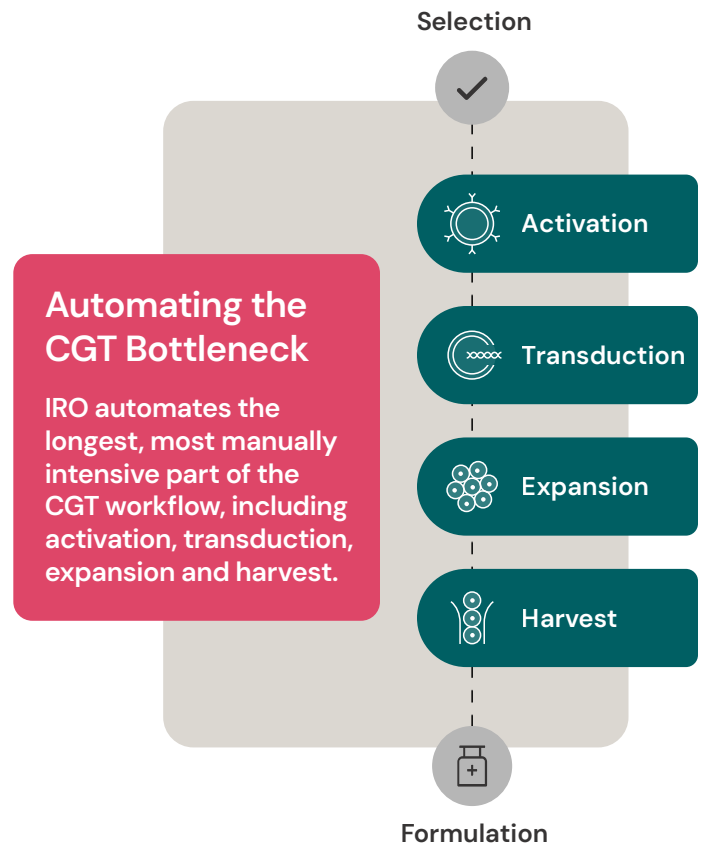
One flexible platform from R&D to GMP for multiple clinical programs

GMP-ready and 21 CFR Part 11 compliant: shortens tech transfer and optimization times for a faster path to the clinic

Mitigates risk of process change and comparability between your clinical and commercial stage

Helps you reach the next value inflection point more quickly

Increases your ability to secure future funding or partners with a viable plan to reach scale



## Scale Your Impact with IRO

IRO combines an efficient and flexible platform with a scalable, digital solution to industrialize precision medicine manufacturing – delivering a return on investment to innovators developing a new generation of therapies.

- ✓ Platform built for CGT, not repurposed from biologics
- ✓ Reduces labor by 50-70% and manufacturing costs by 30-50%
- ✓ Reduces batch failure rates to hit target dose more consistently
- ✓ Enables manufacturing in GMP Grade C or D cleanrooms
- ✓ Increases throughput per sq ft, ~1000 doses per year in 1000 sq ft
- ✓ Facilitates multi-site manufacturing and comparability

## Bioreactor

### Novel Bellows Bioreactor

- Wide Operating Volume Range
- 50ml to 1L
- Flexible operating volume range allows activation, transduction, and expansion in one consumable

### Static and Dynamic Culture

- Adjustable mixing mechanism to optimize processes, including static, rocking, and compression

## OriConnect™

The OriConnect™ System closes and automates sterile fluid transfer, minimizing dead volumes by eliminating the need for tubing, bags, and pumps to transfer fluid from the LVC and SVC to the Bioreactor.



## Large Volume Consumable (LVC)

### Automated Dispense

- Closed and automated media and cell addition, eliminating manual steps to increase throughput and enable scale-up

## Small Volume Consumable (SVC)

### Automated Sampling 1 ml to 10 ml

- Automation delivers consistent, representative samples for quality and process monitoring

# Ready to **Scale Your Impact?**

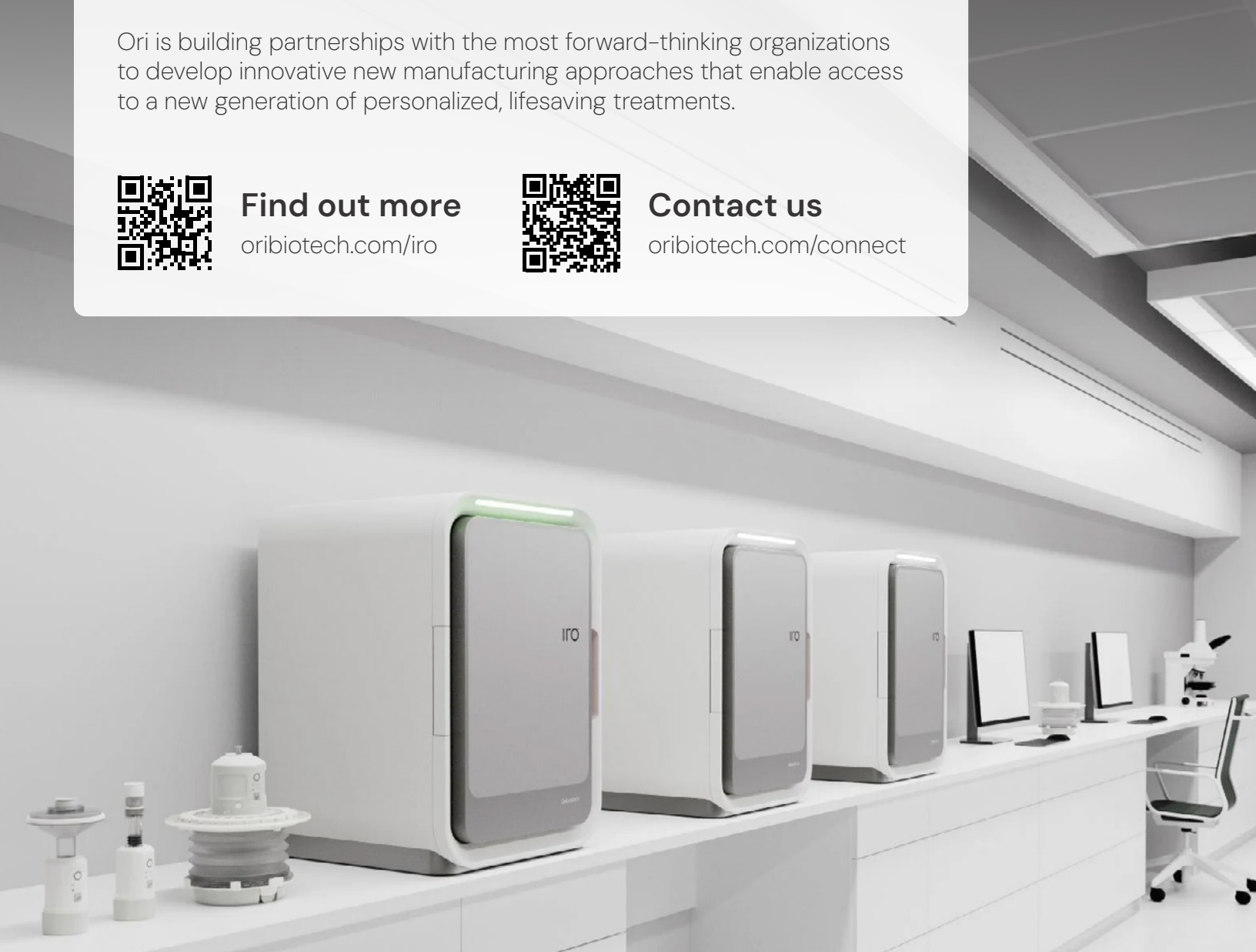
Ori is building partnerships with the most forward-thinking organizations to develop innovative new manufacturing approaches that enable access to a new generation of personalized, lifesaving treatments.



**Find out more**  
[oribiotech.com/iro](https://oribiotech.com/iro)



**Contact us**  
[oribiotech.com/connect](https://oribiotech.com/connect)



 **Manufacturing  
Brighter Futures**

Oribiotech Ltd  
CIC Philadelphia  
3675 Market St, Suite 200  
Philadelphia, PA 19204

Oribiotech Ltd 2025 © All rights reserved. Oribiotech Ltd is registered in England and Wales. "Ori", "Ori Biotech", "Iro" and the O icon are registered trademarks of Oribiotech Ltd.

Company registration 09757696.

Oribiotech Ltd  
London Biosciences Innovation Centre  
2 Royal College Street  
London, NW1 0NH